

SHARK
SIXEIGHT
 series 68
 IP68 GEL INSULATED JOINTS



The first IP68 tested and certified gel joint.
 Under ordinary conditions, the IP protection degree certified by Intertek guarantees a value of 68:



68



Total protection from dust

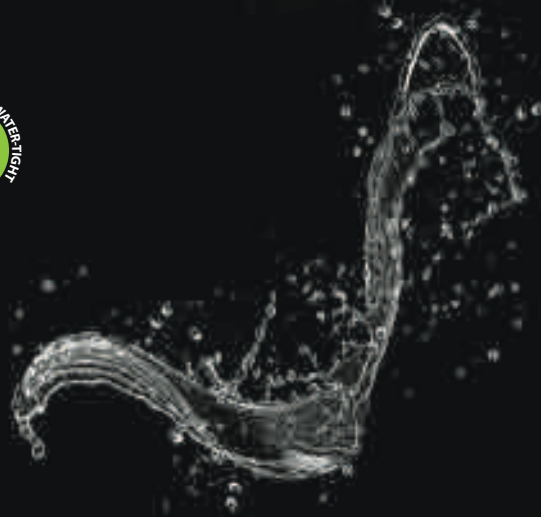
The fully closed joint with the cable inside is totally protected from dust and access to live parts

68



Protection from water

The fully closed joint with the cable inside is totally water resistant allowing permanent immersion at up to 10 metres in depth

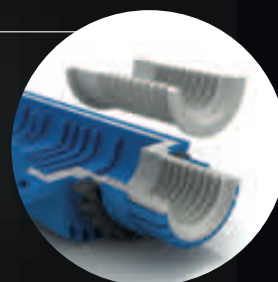
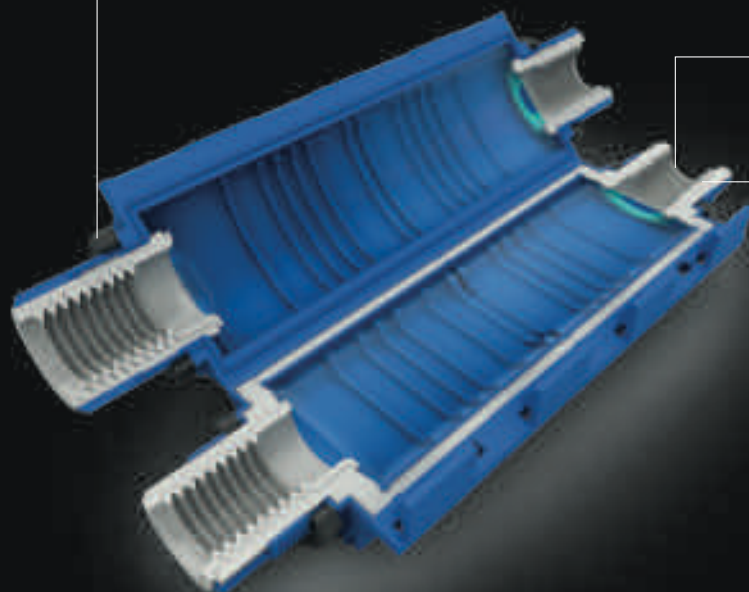


Shark SIXEIGHT has been selected by the Permanent Observatory of Design of the ADI (the Industrial Design Association) for inclusion in the ADI Design Index, ADI's annual publication that brings together the best Italian design.



safety racks
prevent the reopening of the joint without the use of tools, ensuring no accidental contact with live parts, as required by IEC 60364 standard

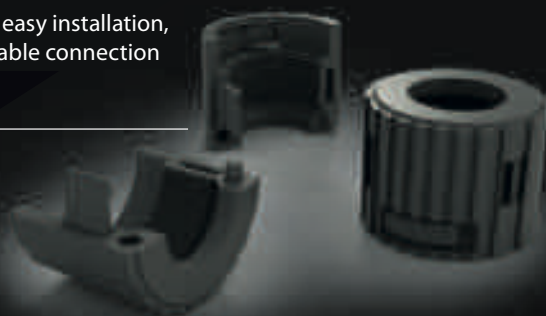
no walls
for even quicker and easier installation



modular gaskets
to guarantee optimal installation and sealing performance for cables of varying cross-sections and external diameters



modular nuts
for safe and easy installation, even after cable connection



Available in 3 sizes

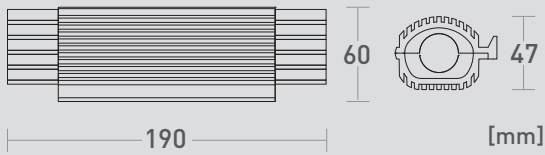


EN 50393
EN 60529





- Compliant with CEI EN 50393 standard for low voltage joints 0.6/1 kV
- Self-extinguishing in accordance with EN 60695-2-11 standard
- Low smoke and toxic gas emission in accordance with CEI 20-37/2-1 and CEI 20-37/4 standards
- **IP68 protection level** (in accordance with CEI EN 60529 standard) tested in water at a depth of 10 metres with independent certification by Intertek
- Operating temperature: -20 °C to 90 °C
- Compliant with directive 2011/65/UE (RoHS 2)



Applications

- Installation in permanent immersion
- Underground installation
- Overhead installation
- Installation in cable ducts
- Temporary installations

Advantages

- 100% water resistant
- 100% impenetrable
- Ready to use
- Re-enterable
- No resin or gel to cast
- Usable immediately
- Excellent electrical insulation
- No accidental access to live parts
- Good mechanical resistance
- No expiry date
- Non-hazardous product



officially tested by Intertek



100% impenetrable



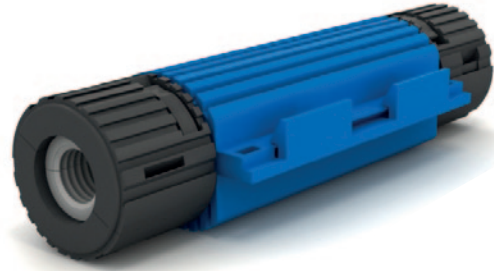
100% water resistant



ready to use



permanent immersion



Shark 6801



code SH6801

IP68 gel joint
Straight connections
Cables up to five cores *

Kit contents

- Gel joint - size 1
- Tightening and joint insulating nuts
- Assembly instructions

Table of use



IP68 STRAIGHT connections

Cores	Conductor cross-section (mm ²)	
	min	max
	25 *	50 *
	1.5 *	6 *

Cable diameter (min-max): 12-18 mm

* with suitable connectors

Shark 6801 > IP68 gel joint

Optional connectors



MR 10

code MR0050

Cylindrical end-to-end connector with shear head bolts



- Tin-plated aluminium connector with steel shear head tightening bolts **suitable for copper-copper, aluminium-aluminium, and copper-aluminium connections**
- Can be installed without the use of seaming tools



Watch the video

Table of use

Cores	Conductor cross-section (mm ²)	
	min	max
	25	50

Cable diameter (min-max): 12-18 mm

MH0306

code MH0306

Three-pole insulated terminal block



- **Compliant with DIN EN 60998 and CSA/UL standards**
VDE label - Current 20 A



Watch the video

Table of use

Cores	Conductor cross-section (mm ²)	
	min	max
	2.5	6

Cable diameter (min-max): 12-18 mm

MC306-RJ

code MC0306RJ

Pre-assembled three-pole insulated terminal block



- Brass connectors
- PA insulating body
- Steel hex head grubs
- **Available upon request a version suitable for copper-copper, aluminium-aluminum, and copper-aluminium connections**



Watch the video

Table of use

Cores	Conductor cross-section (mm ²)	
	min	max
	2.5	6

Cable diameter (min-max): 12-18 mm

CP0306

code CP0306

Kit of 5 insulated compression connectors



- Tin-plated copper conductors
- **Suitable for copper-copper and aluminium-aluminum connections**
- Supplied in a pack of 5 pieces.



Watch the video

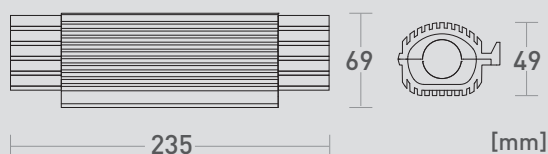
Table of use

Cores	Conductor cross-section (mm ²)	
	min	max
	2.5	6

Cable diameter (min-max): 12-18 mm



- Compliant with CEI EN 50393 standard for low voltage joints 0.6/1 kV
- Self-extinguishing in accordance with EN 60695-2-11 standard
- Low smoke and toxic gas emission in accordance with CEI 20-37/2-1 and CEI 20-37/4 standards
- **IP68 protection level** (in accordance with CEI EN 60529 standard) tested in water at a depth of 10 metres with independent certification by Intertek
- Operating temperature: -20 °C to 90 °C
- Compliant with directive 2011/65/UE (RoHS 2)



Applications

- Installation in permanent immersion
- Underground installation
- Overhead installation
- Installation in cable ducts
- Temporary installations

Advantages

- 100% water resistant
- 100% impenetrable
- Ready to use
- Re-enterable
- No resin or gel to cast
- Usable immediately
- Excellent electrical insulation
- No accidental access to live parts
- Good mechanical resistance
- No expiry date
- Non-hazardous product



officially tested by Intertek



100% impenetrable



100% water resistant



ready to use



permanent immersion



Shark 6802



code SH6802

IP68 gel joint
Straight connections
Cables up to 5 cores*

Kit contents

- Gel joint - size 2
- Tightening and joint insulating nuts
- Assembly instructions

Table of use



IP68 STRAIGHT connections

Cores	Conductor cross-section (mm ²)	
	min	max
	50 *	95 *
	2.5 *	10 *

Cable diameter (min-max): 14-21 mm

* with suitable connectors

Shark 6802 > IP68 gel joint

Optional connectors



MR 11

code MR0051

Cylindrical end-to-end connector with shear head bolts



- Tin-plated aluminium connector with steel shear head tightening bolts **suitable for copper-copper, aluminium-aluminium, and copper-aluminium connections**
- Can be installed without the use of seaming tools

Table of use

Cores	Conductor cross-section (mm ²)	
	min	max
	50	95
Cable diameter (min-max): 14-21 mm		

MC510-RJ

code MC0510RJ

Pre-assembled five-pole insulated terminal block



- Brass connectors
- PA insulating body
- Steel hex head grubs
- **Available upon request a version suitable for copper-copper, aluminium-aluminum, and copper-aluminium connections**



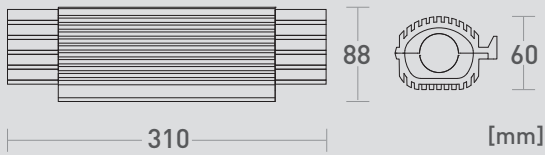
Watch the video

Table of use

Cores	Conductor cross-section (mm ²)	
	min	max
	2.5	10
Cable diameter (min-max): 14-21 mm		



- Compliant with CEI EN 50393 standard for low voltage joints 0.6/1 kV
- Self-extinguishing in accordance with EN 60695-2-11 standard
- Low smoke and toxic gas emission in accordance with CEI 20-37/2-1 and CEI 20-37/4 standards
- **IP68 protection level** (in accordance with CEI EN 60529 standard) tested in water at a depth of 10 metres with independent certification by Intertek
- Operating temperature: -20 °C to 90 °C
- Compliant with directive 2011/65/UE (RoHS 2)



Applications

- Installation in permanent immersion
- Underground installation
- Overhead installation
- Installation in cable ducts
- Temporary installations

Advantages

- 100% water resistant
- 100% impenetrable
- Ready to use
- Re-enterable
- No resin or gel to cast
- Usable immediately
- Excellent electrical insulation
- No accidental access to live parts
- Good mechanical resistance
- No expiry date
- Non-hazardous product



officially tested by Intertek



100% impenetrable



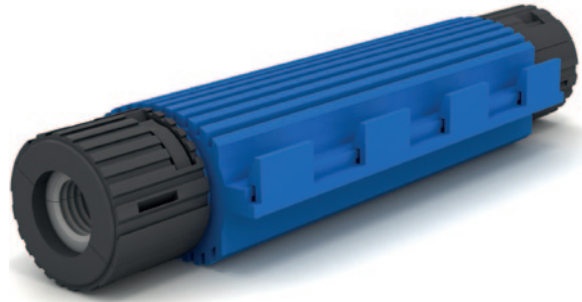
100% water resistant



ready to use



permanent immersion



Shark 6803



code SH6803

IP68 gel joint
Straight connections
Cables up to 5 cores*

Kit contents

- Gel joint - size 3
- Tightening and joint insulating nuts
- Assembly instructions

Table of use



IP68 STRAIGHT connections

Cores	Conductor cross-section (mm ²)	
	min	max
	120 *	240 *
	10 *	25 *

Cable diameter (min-max): 20-30 mm

* with suitable connectors

Shark 6803 > IP68 gel joint Optional connectors



MC525-RJ


code MC0525RJ

Table of use

Pre-assembled five-pole insulated terminal block



- Brass connectors
- PA insulating body
- Steel hex head grubs
- **Available upon request a version suitable for copper-copper, aluminium-aluminum, and copper-aluminium connections**

Cores	Conductor cross-section (mm ²)	
	min	max
	2.5	25
Cable diameter (min-max): 20-30 mm		