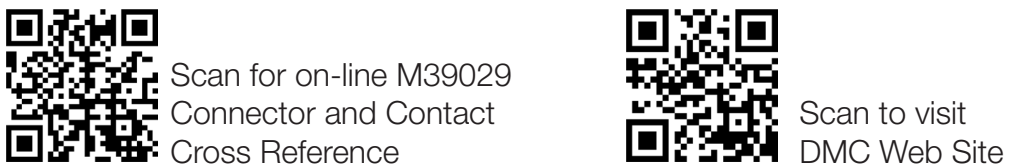
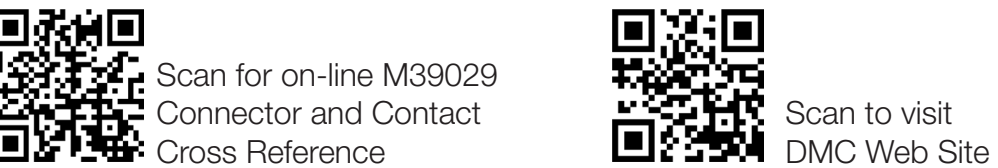


POWER CONTACT TOOLING GUIDE

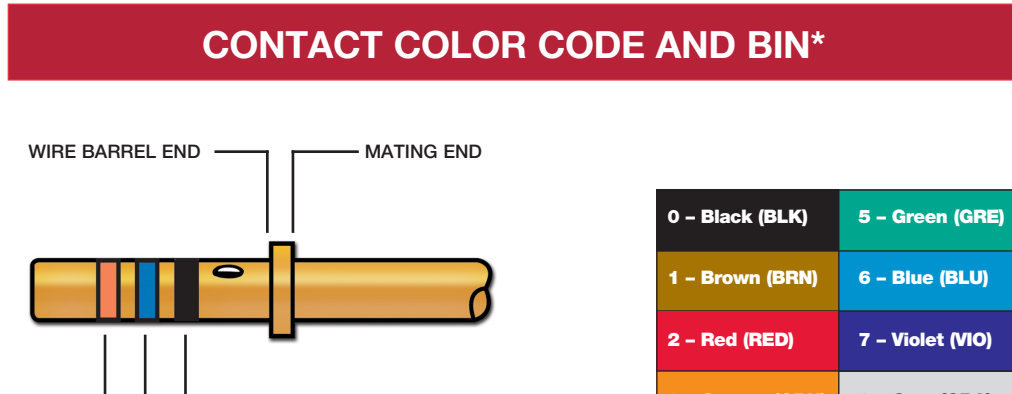
www.dmctools.com • (407) 855-6161



Scan for on-line M39029 Connector and Contact Cross Reference



Scan to visit DMC Web Site



*BASIC IDENTIFICATION NUMBER
• Manufacture range: 360 (Orange, Blue, Black)
• Distinguishes have the option of identifying contacts by stamping the BIN code on the shoulder or the wire barrel (see 10 and 14g).

M39029 CONTACT* Quick Location Chart

PART NUMBER	CONNECTOR SERIES REFERENCE NUMBER	CONTACT PART NUMBER	CONNECTOR SERIES REFERENCE NUMBER	CONTACT PART NUMBER	CONNECTOR SERIES REFERENCE NUMBER
M39029/1	28	M39029/36	7	M39029/77	10, 12, 13*
M39029/2	M39029/37	7	M39029/78	7	M39029/78
M39029/3	20	Unpublished	M39029/79	7 *	M39029/79
M39029/4	4, 23, 25, 26	Unpublished	M39029/80	7 *	M39029/80
M39029/5	4, 23, 25, 26	Unpublished	M39029/81	8	M39029/81
M39029/6	1, 2*	Unpublished	M39029/84	8	M39029/84
M39029/7	4, 23*	Unpublished	M39029/85	15, 24*	M39029/85
M39029/8	4, 23*	M39029/44	14	M39029/86	15, 24*
M39029/9	4, 23, 25, 26*	M39029/45	14	M39029/87	2, 10, 11, 12, 13, 28*
M39029/10	4, 23, 25, 26*	M39029/46	17	M39029/88	10, 12, 13*
M39029/11	21	M39029/47	16, 17	M39029/89	2, 11, 26*
M39029/12	21	M39029/48	1	M39029/90	12*
M39029/13	16*	M39029/49	1	M39029/91	12*
M39029/14	16*	M39029/50	26*	M39029/92	Relay Socket
M39029/15	Unpublished	M39029/51	26*	M39029/93	Cancelled
M39029/16	19	M39029/54	5*	M39029/94	Cancelled
M39029/17	18	M39029/55	5, 6*	M39029/95	Cancelled
M39029/18	17, 18	M39029/56	10, 12, 13	M39029/96	Cancelled
M39029/19	18*	M39029/57	2, 11, 26	M39029/97	21*
M39029/20	18*	M39029/58	2, 10, 11, 12, 13*	M39029/98	21*
M39029/21	19*	M39029/59	10, 12, 13, 26	M39029/99	Cancelled
M39029/22	18, 19, 29*	M39029/60	10, 12, 13*	M39029/100	Cancelled
M39029/23	3*	M39029/63	2	M39029/101	Relay Socket
M39029/24	3*	M39029/64	2	M39029/102	10, 11, 12, 13*
M39029/25	3*	M39029/65	Inactive	M39029/103	10, 12, 13*
M39029/26	3*	M39029/66	Inactive	M39029/104	Cancelled
M39029/27	11*	M39029/68	Inactive	M39029/105	Cancelled
M39029/28	10, 11, 12, 13*	M39029/69	27	M39029/106	10, 12, 13*
M39029/29	15, 24	M39029/70	27	M39029/107	10, 13*
M39029/30	15, 24	M39029/71	Wirewrap	M39029/108	Cancelled
M39029/31	3, 5, 6, 9, 22	M39029/72	Wirewrap	M39029/109	Cancelled
M39029/32	3, 5, 6, 9, 22	M39029/73	10, 12, 25, 26*	M39029/113	12*
M39029/33	16	M39029/74	4, 21, 25, 26*	M39029/114	12*
M39029/34	7	M39029/75	10, 12, 13	M39029/115	12*
M39029/35	7	M39029/76	10, 11, 12, 13*	M39029/116	12*

*Shielded and thermoplastic contacts are not shown on this power contact table.
Consult DMC for details. Note: A539029/13 & 14 are cancelled
Additional cross-reference tooling information for Mil-Spec Coax, Triax, Terminals, and Splices can be found in our catalogs and at www.dmctools.com

CONNECTOR IMAGE	CONNECTOR PART NUMBER	DESCRIPTION	SOURCES	CONTACTS	SIZE (AWG)	MATING END	WIRE BARREL	PIN LOC.	PART NUMBER (CURRENT)	PART NUMBER (SUPPRESSED)	WIRE RANGE	COLOR CODE (BIN)	CRIMP TOOL AND ACCESSORY				ASSEMBLY TOOLS			
													AFR	AFRM	M880	35-00	WAZ1 (POS)	WAZ1 (DE)	INSTALLING	REMOVAL
	M50565	WALL MOUNT RECEPTACLE	AMPHENOL CORP. ROBERT TECHNOLOGIES	6	6	P	M30094B-317	M30509-11	6											
	M50566	STRAIGHT PLUG		4	6	P	M30094B-318	M30509-12	4											
	M50567	IN-LINE RECEPTACLE		60	6	P	M30094B-319	M30509-14	6											
	M50568	WALL MOUNT PLUG		6	6	S	M30094B-320	M30509-6	6											
				4	4	P	M30094B-320	M30509-8	4											
				4N	4	P	M30094B-321	M30509-9	4											
				40S	4	P	M30094B-322	M30509-13	4											
				4	4	S	M30094B-322	M30509-5	4											
				0	0	P	M30094B-323	M30509-5	0											
				0N	0	P	M30094B-324	M30509-6	0											
	M50565	WALL MOUNT RECEPTACLE	AMPHENOL CORP. ROBERT TECHNOLOGIES	6	6	P	M30094B-317	M30509-11	6											
	M50566	STRAIGHT PLUG		4	6	P	M30094B-318	M30509-12	4											
	M50567	IN-LINE RECEPTACLE		60	6	P	M30094B-319	M30509-14	6											
	M50568	WALL MOUNT PLUG		6	6	S	M30094B-320	M30509-6	6											
				4	4	P	M30094B-320	M30509-8	4											
				4N	4	P	M30094B-321	M30509-9	4											
				40S	4	P	M30094B-322	M30509-13	4											
				4	4	S	M30094B-322	M30509-5	4											
				0	0	P	M30094B-323	M30509-5	0											
				0N	0	P	M30094B-324	M30509-6	0											
	M50565	WALL MOUNT RECEPTACLE	AMPHENOL CORP. ROBERT TECHNOLOGIES	6	6	P	M30094B-317	M30509-11	6											
	M50566	STRAIGHT PLUG		4	6	P	M30094B-318	M30509-12	4											
	M50567	IN-LINE RECEPTACLE		60	6	P	M30094B-319	M30509-14	6											
	M50568	WALL MOUNT PLUG		6	6	S	M30094B-320	M30509-6	6											
				4	4	P	M30094B-320	M30509-8	4											
				4N	4	P	M30094B-321	M30509-9	4											
				40S	4	P	M30094B-322	M30509-13	4											
				4	4	S	M30094B-322	M30509-5	4											
				0	0	P	M30094B-323	M30509-5	0											
				0N	0	P	M30094B-324	M30509-6	0											
	M50565	WALL MOUNT RECEPTACLE	AMPHENOL CORP. ROBERT TECHNOLOGIES	6	6	P	M30094B-317	M30509-11	6											
	M50566	STRAIGHT PLUG		4	6	P	M30094B-318	M30509-12	4											
	M50567	IN-LINE RECEPTACLE		60	6	P	M30094B-319	M30509-14	6											
	M50568	WALL MOUNT PLUG		6	6	S	M30094B-320	M30509-6	6											
				4	4	P	M30094B-320	M30509-8	4											
				4N	4	P	M30094B-321	M30509-9	4											
				40S	4	P	M30094B-322	M30509-13	4											
				4	4	S	M30094B-322	M30509-5	4											
				0	0	P	M30094B-323	M30509-5	0											
				0N	0	P	M30094B-324	M30509-6	0											
	M50565	WALL MOUNT RECEPTACLE	AMPHENOL CORP. ROBERT TECHNOLOGIES	6	6	P	M30094B-317	M30509-11	6											
	M50566	STRAIGHT PLUG		4	6	P	M30094B-318	M30509-12	4											
	M50567	IN-LINE RECEPTACLE		60	6	P	M30094B-319	M30509-14	6											
	M50568	WALL MOUNT PLUG		6	6	S	M30094B-320	M30509-6	6											
				4	4	P	M30094B-320	M30509-8	4											
				4N	4	P	M30094B-321	M30509-9	4											
				40S	4	P	M30094B-322	M30509-13	4											
				4	4	S	M30094B-322	M30509-5	4											
				0	0	P	M30094B-323	M30509-5	0											
				0N	0	P	M30094B-324	M30509-6	0											
	M50565	WALL MOUNT RECEPTACLE	AMPHENOL CORP. ROBERT TECHNOLOGIES	6	6	P	M30094B-317	M30509-11	6											
	M50566	STRAIGHT PLUG		4	6	P	M30094B-318	M30509-12	4											
	M50567	IN-LINE RECEPTACLE		60	6	P	M30094B-319	M30509-14	6											
	M50568	WALL MOUNT PLUG		6	6	S	M30094B-320	M30509-6	6											
				4	4	P	M30094B-320	M30509-8	4											
				4N	4	P	M30094B-321	M30509-9	4											
				40S	4	P	M30094B-322	M30509-13	4											
				4	4	S	M30094B-322	M30509-5	4											
				0	0	P	M30094B-323	M30509-5	0											
				0N	0	P	M30094B-324	M30509-6	0											
	M50565	WALL MOUNT RECEPTACLE	AMPHENOL CORP. ROBERT TECHNOLOGIES	6	6	P	M30094B-317	M30509-11	6											
	M50566	STRAIGHT PLUG		4	6	P	M30094B-318	M30509-12	4											
	M50567	IN-LINE RECEPTACLE		60	6	P	M30094B-319	M30509-14	6											
	M50568	WALL MOUNT PLUG		6	6	S	M30094B-320	M30509-6	6											
				4	4	P	M30094B-320	M30509-8	4											
				4N	4	P	M30094B-321	M30509-9	4											
				40S	4	P	M30094B-322	M30509-13	4											
				4	4	S	M30094B-322	M30509-5	4											
				0	0	P	M30094B-323	M30509-5	0											
				0N	0	P	M30094B-324	M30509-6	0											
	M50565	WALL MOUNT RECEPTACLE	AMPHENOL CORP. ROBERT TECHNOLOGIES	6	6	P	M30094B-317	M30509-11	6											
	M50566	STRAIGHT PLUG		4	6	P	M30094B-318	M30509-12	4											
	M50567	IN-LINE RECEPTACLE		60	6	P	M30094B-319	M30509-14	6											
	M50568	WALL MOUNT PLUG		6	6	S	M30094B-320	M30509-6	6											
				4	4	P	M30094B-320	M30509-8	4											
				4N	4	P	M30094B-321	M30509-9	4											
				40S	4	P	M30094B-322	M30509-13	4											
				4	4	S	M30094B-322	M30509-5	4											
				0	0	P	M30094B-323	M30509-5	0											
				0N	0	P	M30094B-324	M30509-6	0											
	M50565	WALL MOUNT RECEPTACLE	AMPHENOL CORP. ROBERT TECHNOLOGIES	6	6	P	M30094B-317	M30509-11	6											
	M50566	STRAIGHT PLUG		4	6	P	M30094B-318	M30509-12	4											
	M50567	IN-LINE RECEPTACLE		60	6	P	M30094B-319	M30509-14	6											
	M50568	WALL MOUNT PLUG		6	6	S	M30094B-320	M30509-6	6											
				4	4	P	M30094B-320	M30509-8	4											
				4N	4	P	M30094B-321	M30509-9	4											
				40S	4	P	M30094B-322	M30509-13	4											
				4	4	S	M30094B-322	M30509-5	4											
				0	0	P	M30094B-323	M30509-5	0											
				0N	0	P	M30094B-324	M30509-6	0											
	M50565	WALL MOUNT RECEPTACLE	AMPHENOL CORP. ROBERT TECHNOLOGIES	6	6	P	M30094B-317	M30509-11	6											
	M50566	STRAIGHT PLUG		4	6	P	M30094B-318	M30509-12	4											
	M50567	IN-LINE RECEPTACLE		60	6	P	M30094B-319	M30509-14	6											
	M50568	WALL MOUNT PLUG		6	6	S	M30094B-320	M30509-6	6											
				4	4	P	M30094B-320	M30509-8	4											
				4N	4	P	M30094B-321	M30509-9	4											
				40S	4	P	M30094B-322	M30509-13	4											
				4	4	S	M30094B-322	M30509-5	4											
				0	0	P	M30094B-323	M30509-5	0											
				0N	0	P	M30094B-324	M30509-6	0											
	M50565	WALL MOUNT RECEPTACLE	AMPHENOL CORP. ROBERT TECHNOLOGIES	6	6	P	M30094B-317	M30509-11	6											
	M50566	STRAIGHT PLUG		4	6	P	M30094B-318	M30509-12	4											
	M50567	IN-LINE RECEPTACLE		60	6	P	M30094B-319	M30509-14	6											
	M50568	WALL MOUNT PLUG		6	6	S	M30094B-320	M30509-6	6											
				4	4	P	M30094B-320	M30509-8	4											
				4N	4	P	M30094B-321	M30509-9	4											
				40S	4	P	M30094B-322	M30509-13	4											
				4	4	S	M30094B-322	M30509-5	4											
				0	0	P	M30094B-323	M30509-5	0											
				0N	0	P	M30094B-324	M30509-6	0											
	M50565	WALL MOUNT RECEPTACLE	AMPHENOL CORP. ROBERT TECHNOLOGIES	6	6	P	M30094B-317	M30509-11	6											
	M50566																			